

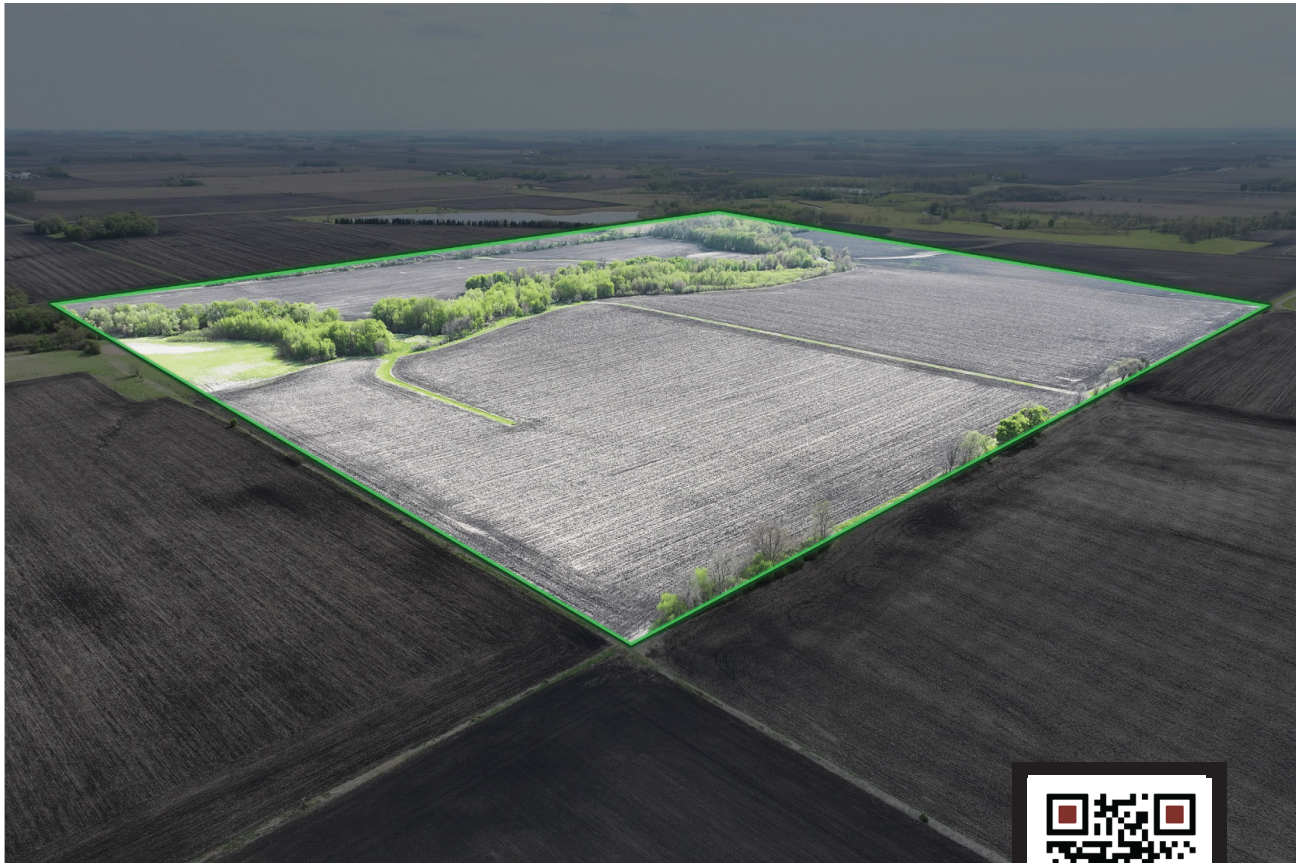
LAND FOR SALE



**160.00± ACRES**

## Jaeger Family Farm

Lura Township, Faribault County, Minnesota



**FOR SALE**  
**\$1,600,000**

Scan to view this property.



FOR ADDITIONAL INFORMATION CONTACT:

**Geoff Mead, ALC**

BROKER, ACCREDITED LAND CONSULTANT

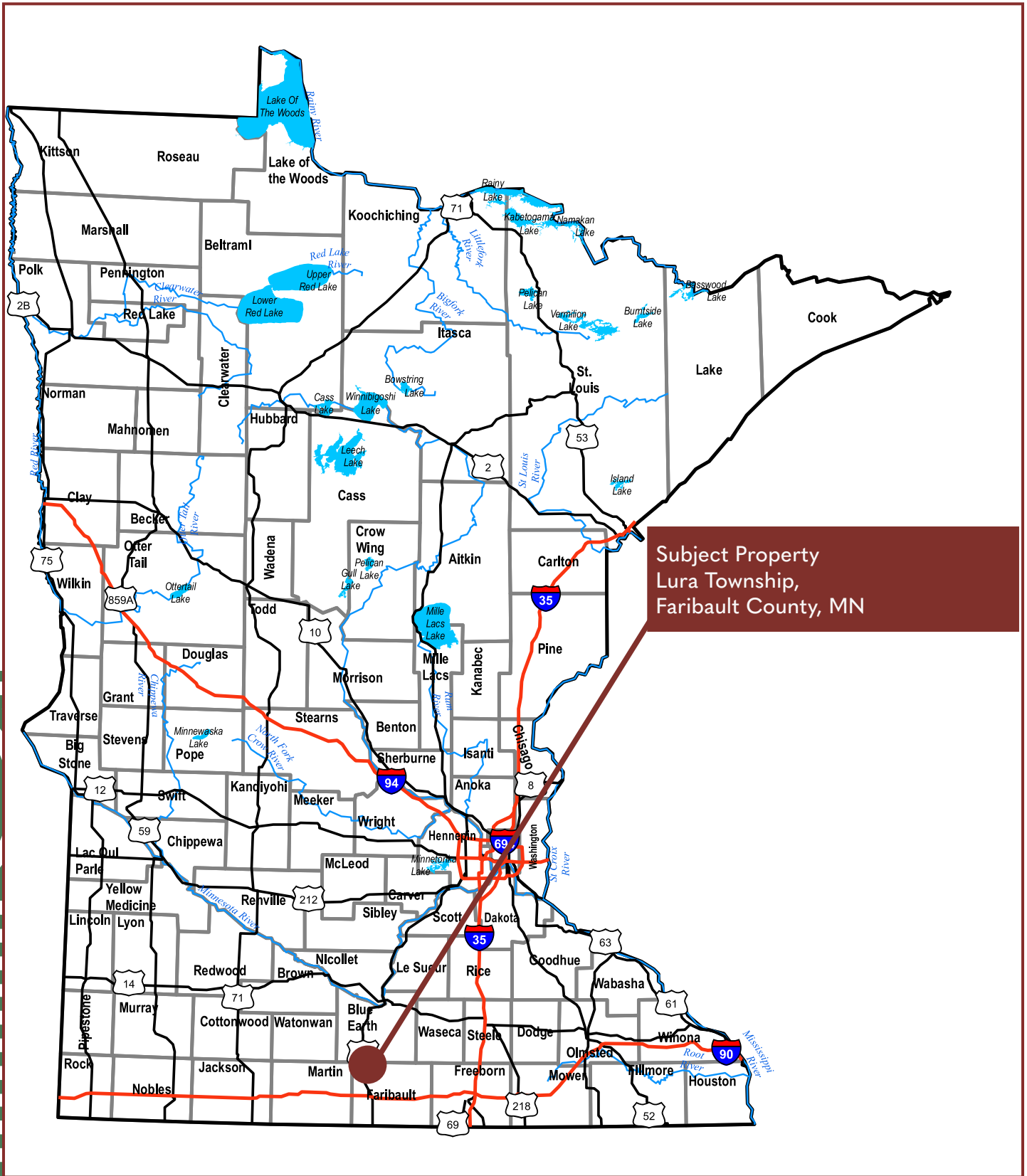
AUCTIONEER #83-50

geoff@wingertlandservices.com

C: 507.317.6266 | O: 507.248.5263

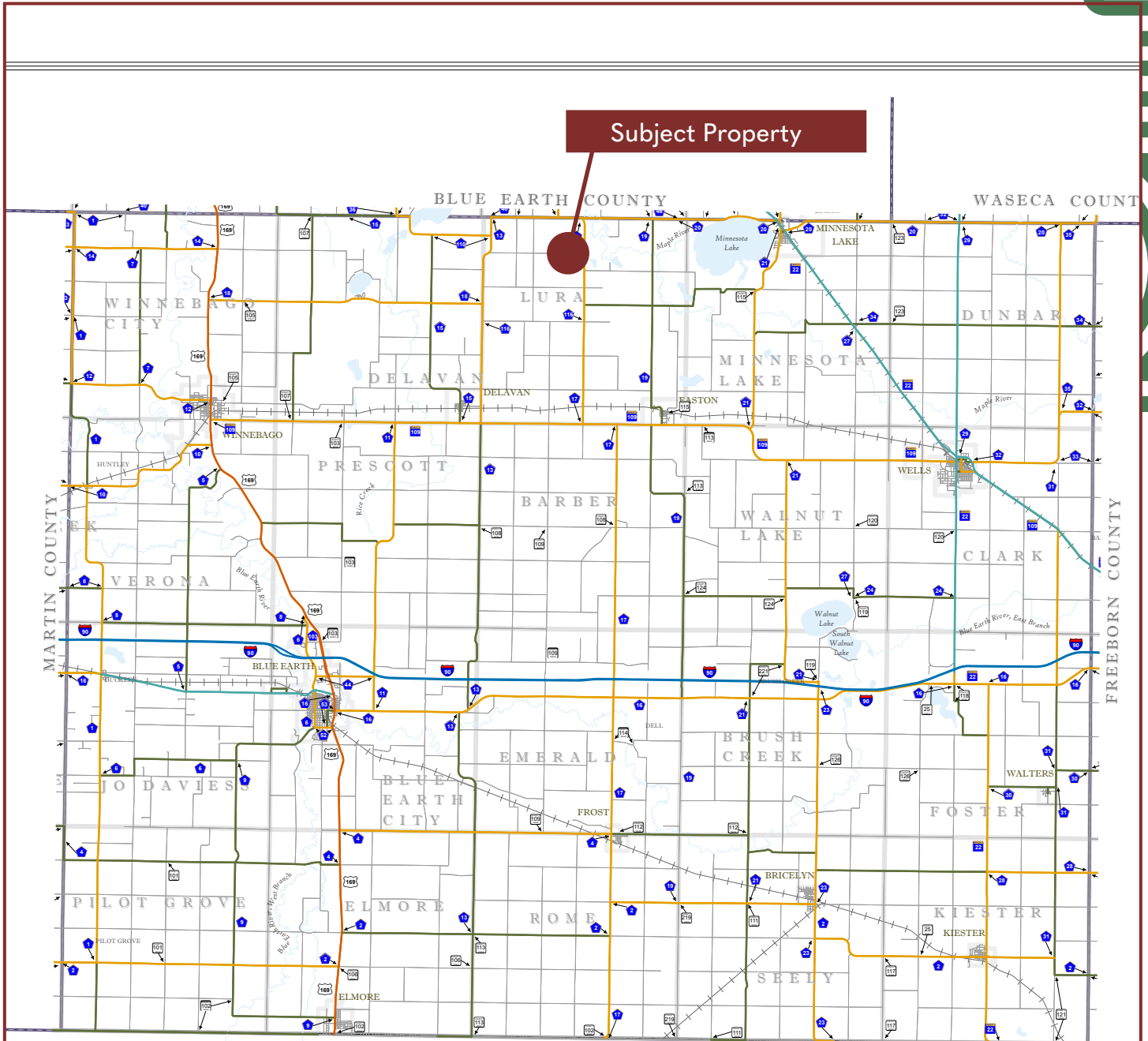
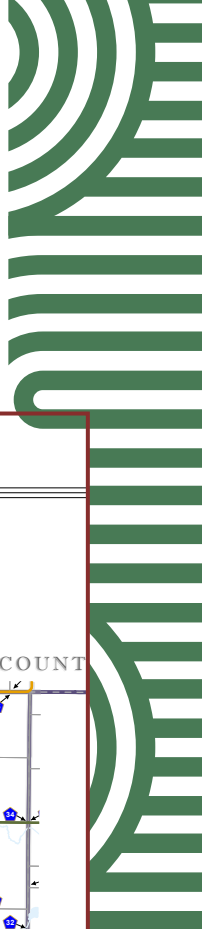
wingertlandservices.com





Subject Property  
Lura Township,  
Faribault County, MN

# Faribault County Minnesota



I O W A

an alternative format, call 651-366-4718 or 1-800-657-3774 (Greater Minnesota); 711 or 1-800-627-3529 (Minnesota Relay). You may also send an e-mail to [ADArequest.dot@state.mn.us](mailto:ADArequest.dot@state.mn.us). (Please request at least one week in advance.)

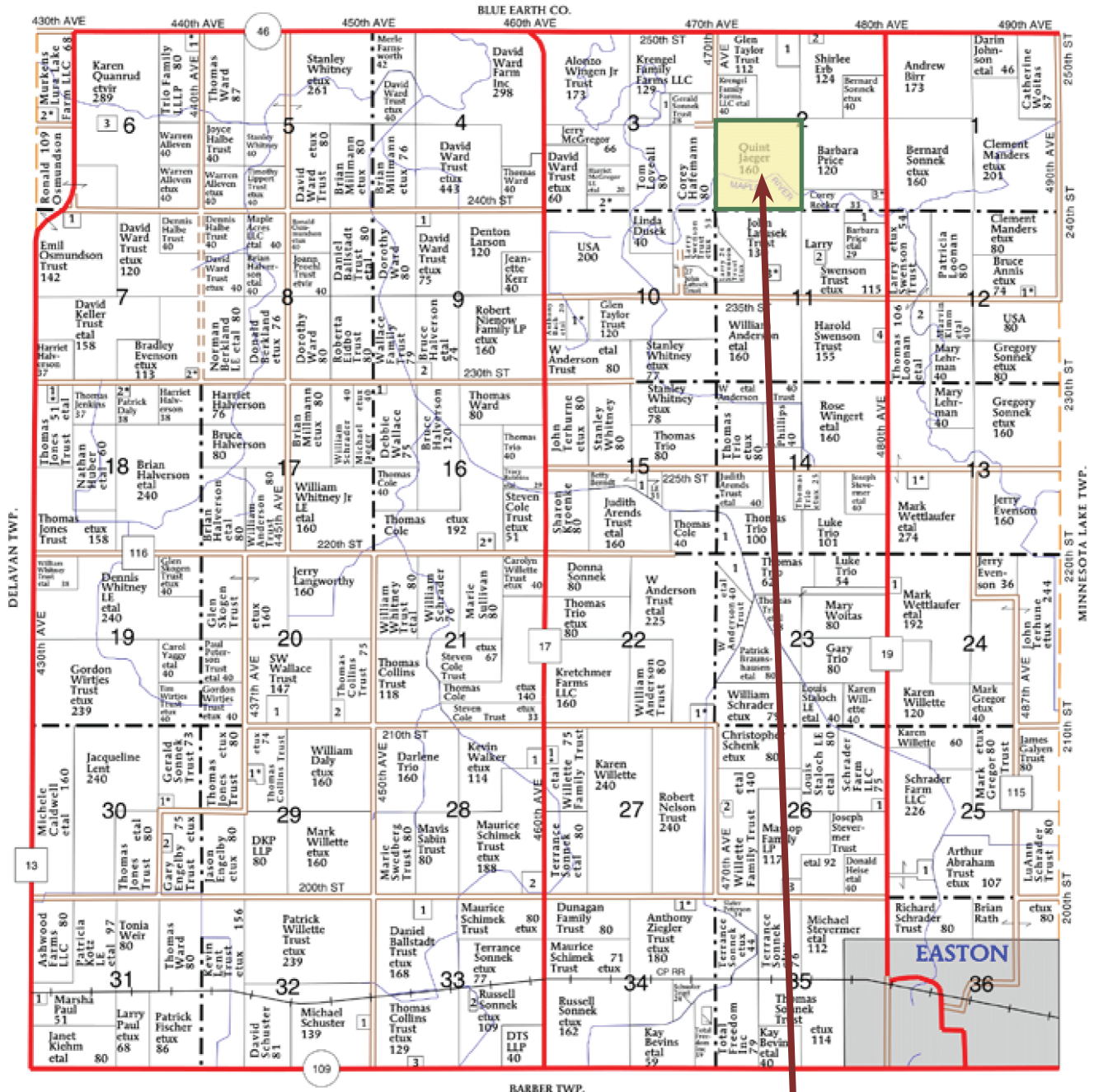
# Lura Township

## Faribault County | T104N-R26W

T-104-N

LURA PLAT

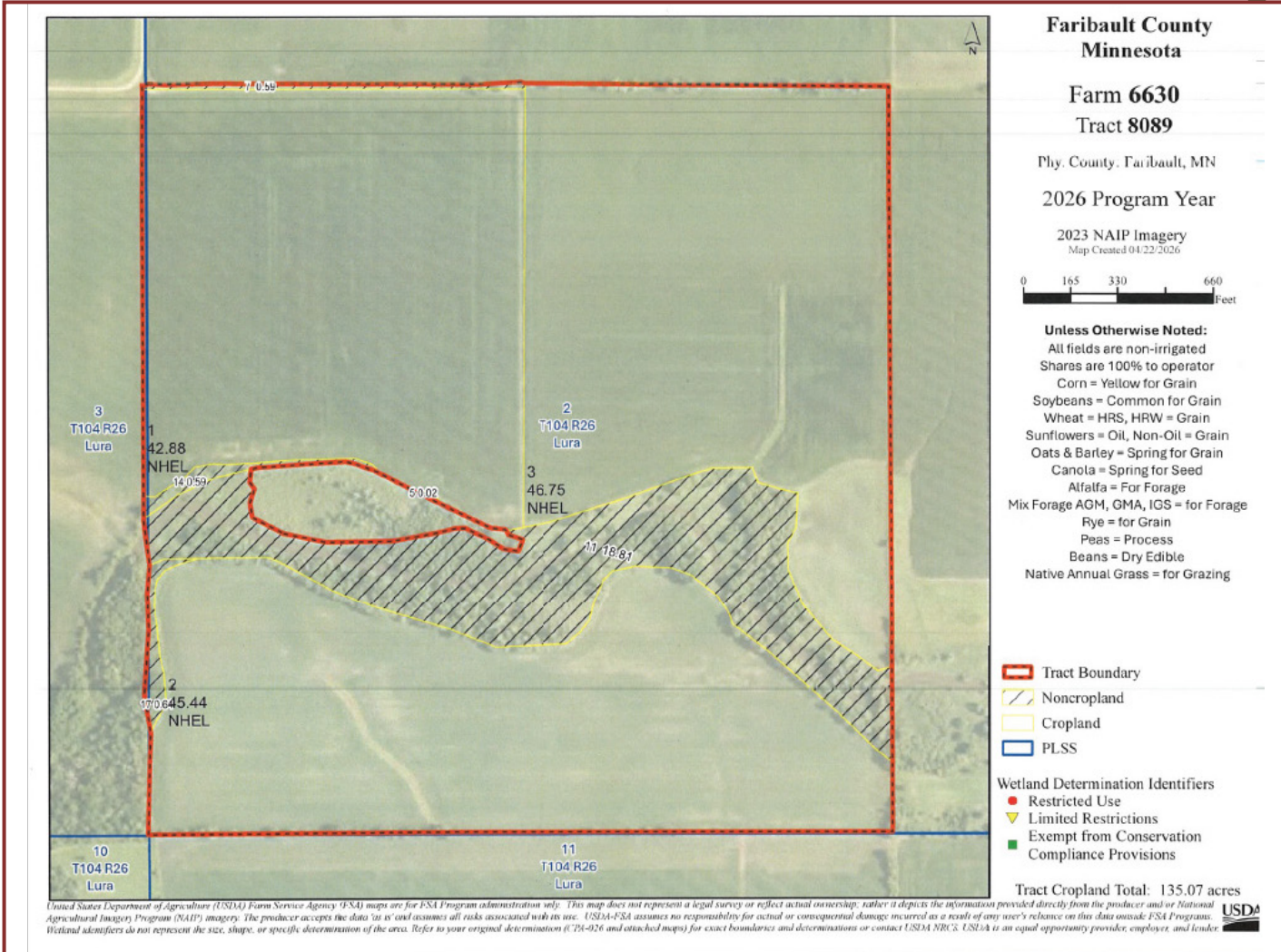
R-26-W



Subject Property

## FSA Aerial Map

### Tract 8089



# Property Information

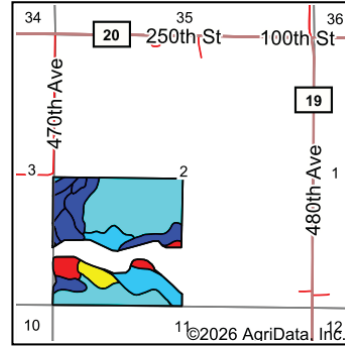
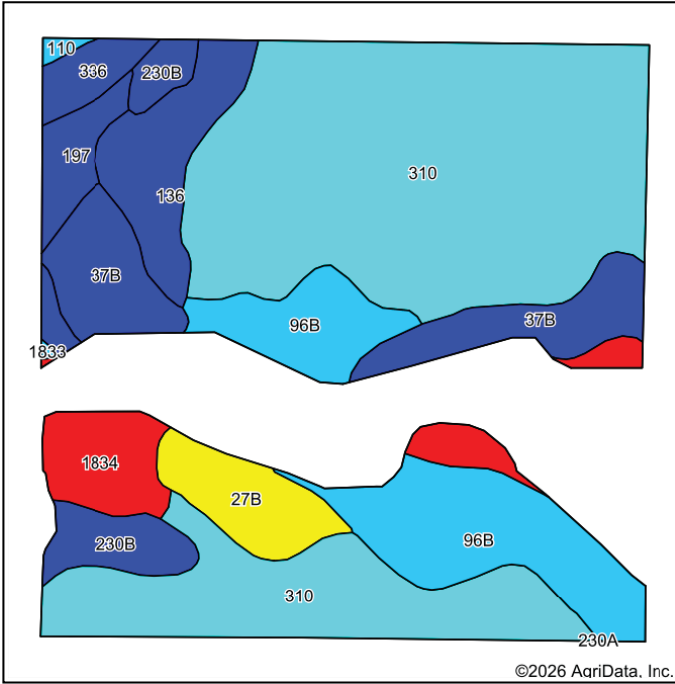
<b>DESCRIPTION:</b>	SW 1/4 Sec2-T104N-R26W	
<b>TAX ID#:</b>	120020300	
<b>REAL ESTATE TAXES:</b>	Estimated Ag Non-Homestead Taxes	\$6,088.00
	Special Assessment	N/A
	Total Estimated Tax & Specials	\$6,088.00
<b>FSA INFORMATION:</b>	Total Acres	160.00± acres
	FSA Tillable Acres	135.07± acres
	Corn Base Acres	67.29± acres
	Corn PLC Yield	137.00± bushels
	Soybean Base Acres	67.78± acres
	Soybean PLC Yield	44.00± bushels
<b>LEASE/RENT INFORMATION:</b>	Farm is leased for 2026 crop year. Farm will be open to farm or lease in 2027.	
<b>SOIL DESCRIPTION:</b>	Beauford Clay, Collinwood Silty Clay, Farrar Fine Sandy Loam, Madelia Silty Clay Loam, See Soils Map.	
<b>CROP PRODUCTIVITY INDEX (CPI):</b>	78.9 CPI	
<b>TOPOGRAPHY:</b>	Level	
<b>DRAINAGE:</b>	Private mains and laterals with outlet to the Maple River. See tile map.	
<b>CRP:</b>	N/A	
<b>NRCS CLASSIFICATION ON TILLABLE ACRES:</b>	NHEL - No Highly Erodible Lands, Wetland Determination Not Complete	
<b>OTHER:</b>	The land south of the Maple River is accessed by way of a field drive easement across the adjoining parcel to the south. Contact Geoff Mead for more information.	

Wingert Land Services stipulated they are representing the Seller exclusively in this transaction.

The information gathered for this brochure in its entirety is from sources deemed reliable, but cannot be guaranteed by Seller, Wingert Land Services, or its staff. Package is subject to prior sale, price change, correction or withdrawal. The buyer must make their own independent investigation of the property. The buyer is purchasing the property "as is, where is, with All Faults" condition.

[wingertlandservices.com](http://wingertlandservices.com)

## Soils Map



State: **Minnesota**  
 County: **Faribault**  
 Location: **2-104N-26W**  
 Township: **Lura**  
 Acres: **127.19**  
 Date: **5/7/2026**



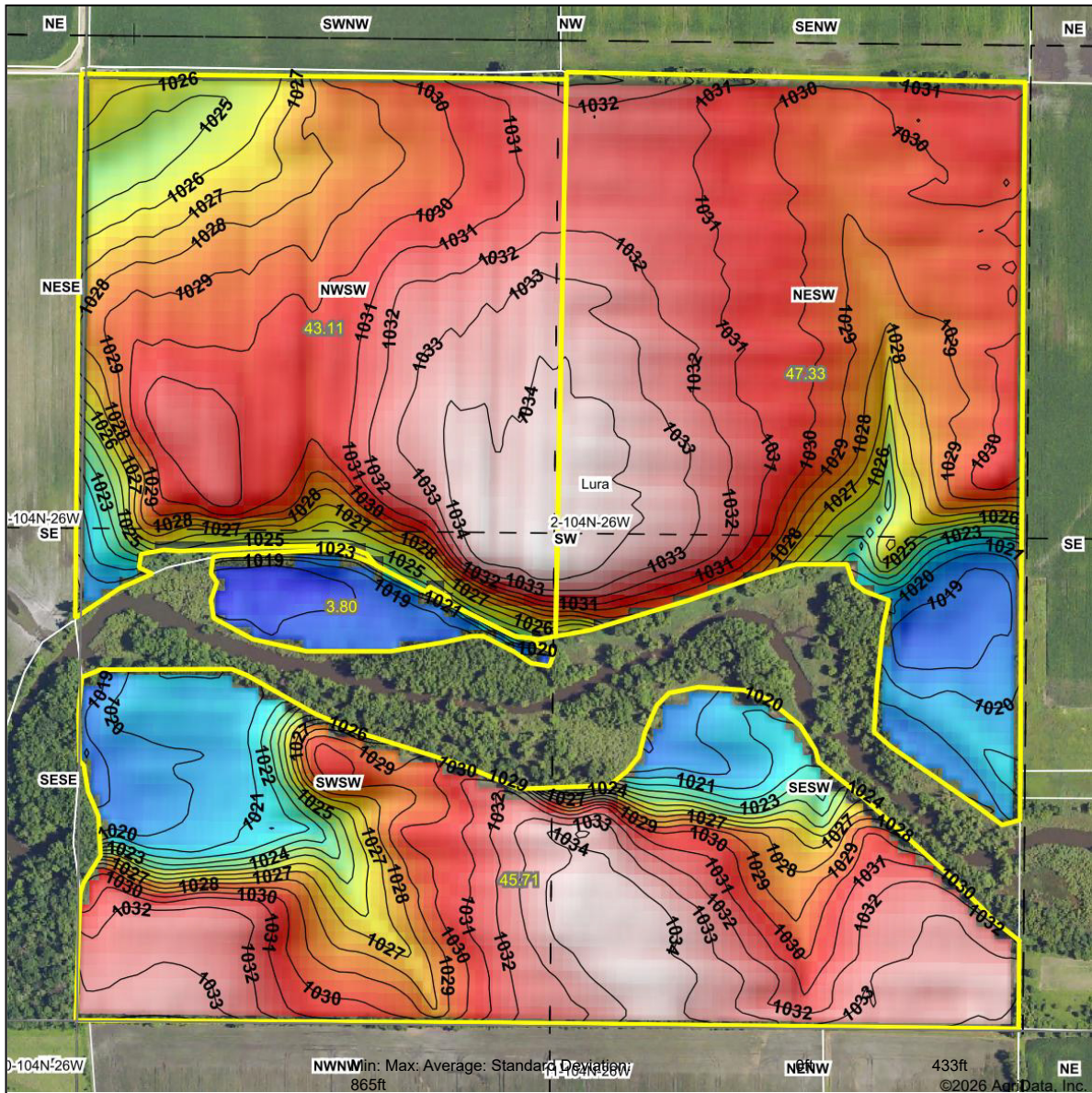
Soils data provided by USDA and NRCS.

Area Symbol: MN043, Soil Area Version: 22										
	Soil Description		Percent of field	PI Legend	Restrictive Layer	Soil Drainage	NonIrr Class *c	Productivity Index	*n NCCPI Overall	
310	Beauford clay, 0 to 2 percent slopes		51.5%		> 6.5ft.	Poorly drained	IIw	77	56	
96B	Collinwood silty clay loam, 2 to 6 percent slopes		14.4%		> 6.5ft.	Moderately well drained	IIe	86	70	
37B	Farrar fine sandy loam, 1 to 6 percent slopes	11.49	9.0%		> 6.5ft.	Well drained	IIe	99	77	
136	Madelia silty clay loam, 0 to 2 percent slopes	7.50	5.9%		> 6.5ft.	Poorly drained	IIw	94	91	
1834	Coland clay loam, 0 to 2 percent slopes, frequently flooded	7.43	5.8%		> 6.5ft.	Poorly drained	Vw	20	40	
27B	Dickinson fine sandy loam, 0 to 6 percent slopes	5.48	4.3%		> 6.5ft.	Well drained	IIIe	60	71	
230B	Kamrar clay loam, 2 to 6 percent slopes	5.02	3.9%		> 6.5ft.	Moderately well drained	IIe	95	79	
197	Kingston silty clay loam, 1 to 3 percent slopes	3.02	2.4%		> 6.5ft.	Somewhat poorly drained	Iw	100	91	
336	Delft clay loam, 0 to 2 percent slopes	3.02	2.4%		> 6.5ft.	Poorly drained	IIw	94	79	
110	Marna silty clay loam, 0 to 2 percent slopes	0.34	0.3%		> 6.5ft.	Poorly drained	IIw	87	77	
1833	Coland clay loam, 0 to 2 percent slopes, occasionally flooded	0.08	0.1%		> 6.5ft.	Poorly drained	IIw	83	83	
							<b>Weighted Average</b>	<b>2.19</b>	<b>78.9</b>	<b>*n 64.1</b>

\*n: The aggregation method is "Weighted Average using all components"  
 \*c: Using Capabilities Class Dominant Condition Aggregation Method

Soils data provided by USDA and NRCS.

# Topography Hillshade



Low High Elevation Source: Interval(ft): USGS 10 meter dem 1  
 2-104N-26W Faribault County Minnesota Field borders provided by Farm Service Agency as of 5/21/2008.

Boundary Center: 43° 50' 12.27, -93° 55' 21.68 5/18/2026 Range: 17.8  
 1,034.9  
 1,028.9  
 4.36 ft



Maps Provided By:  
  
 CUSTOMIZED ONLINE MAPPING  
 © AgriData, Inc. 2025 www.AgriDataInc.com



# Property Images



# Property Images



NE Corner Looking SW



SW Corner Looking NE



# Thank you.



Thank you for allowing us the opportunity to present this property to you.

If this property doesn't align with your needs, please let us know—we're committed to finding a perfect match for your requirements. Additionally, if this property isn't a fit for you, we'd greatly appreciate it if you could share this package with a friend or colleague who might find it of interest.

We're here to assist you every step of the way. Please don't hesitate to reach out with any questions or further needs.



**Chuck Wingert, ALC**  
Broker, Accredited Land  
Consultant Licensed in MN  
charles@wingertlandservices.com  
507.381.9790



**Geoff Mead, ALC**  
Broker, Accredited Land  
Consultant Licensed in MN, IA  
geoff@wingertlandservices.com  
507.317.6266



**Anna Mead**  
Land Specialist, Licensed in MN  
anna@wingertlandservices.com  
507.441.5262



**Amanda Brandts**  
Land Specialist, Licensed in MN  
amanda@wingertlandservices.com  
952.451.2576



**Briana Brandts**  
Land Specialist, Licensed in MN  
bria@wingertlandservices.com  
507.621.0255



**Jake Denn** Land Specialist,  
Licensed in MN jaked@  
wingertlandservices.com  
507.276.0861



**Steve Kibble**  
Land Specialist, Licensed in MN  
steve@wingertlandservices.com  
507.327.8411



**Spencer Mesman**  
Land Specialist, Licensed in MN  
spencer@wingertlandservices.com  
507.220.2781



**Logan O'Rourke**  
Land Specialist, Licensed in MN  
logan@wingertlandservices.com  
507.995.2884



**Jake Sitarz**  
Land Specialist, Licensed in MN  
jakes@wingertlandservices.com  
763.898.2733



**Dan Stensland**  
Land Specialist, Licensed in MN,  
IA dan@wingertlandservices.com  
507.525.4061



**Rick Hauge, ALC** Licensed  
Broker and Appraiser rick@  
wingertlandservices.com  
507.829.5227